



Kylie



Forensic



Neurology

# ETYMOLOGY

By: Kylie Byrd

KYLIE



- ◉ Language Origin: Australian
- ◉ Pronounced: KIE-lee
- ◉ Definition: This name arose in Australia, where it is said to mean "boomerang" in an Australian Aboriginal language.
- ◉ Function: *noun*
- ◉ Etymology: Kylie originated in Australia and was derived from the name Kyle.

## KYLIE (CONTINUED)

- ◉ **United States** ranked #57
- ◉ **VARIANTS:** Kiley, Kilie, Kyla, Kylee, Kyleigh
- ◉ **MASCULINE FORMS:** Chile, Kyle
- ◉ Kylie is also an Irish origin meaning “attractive”, and English where it means “slender”



KYLIE

# FORENSIC

- Pronounced: *fuh-ren-sik*
- **ADJECTIVE** 1. pertaining to, connected with, or used in courts of law or public discussion and debate.
- 2. adapted or suited to argumentation; rhetorical.
- **NOUN** 3. forensics, (used with a singular or plural verb) the art or study of argumentation and formal debate.



# FORENSIC (CONTINUED)

- ◉ **Origin:**

1650-60; < Latin *forēns* ( *is* ) of, belonging to the forum, public (see *forum*, *-ensis*) + *ic*

- ◉ Related forms *fo·ren·si·cal·i·ty* /fəˌrɛnsɪˈkæləti/ *fuh-ren-si-kal-i-tee*, *noun*



# FORENSIC (CONTINUED)

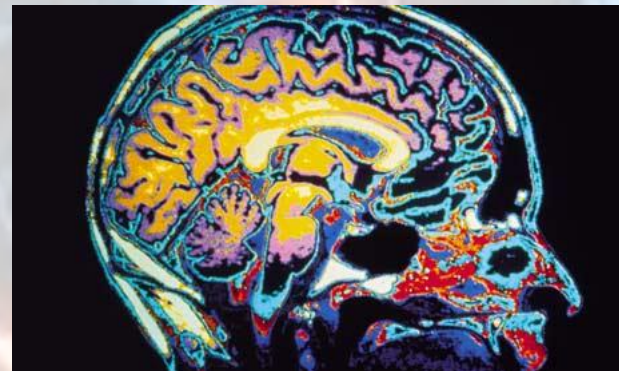
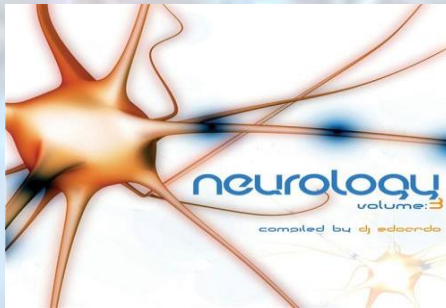
Other forms of Forensic

- ◉ fo·ren·si·cal·ly, adverb
- ◉ non·fo·ren·sic, adjective
- ◉ non·fo·ren·si·cal·ly, adverb
- ◉ un·fo·ren·sic, adjective



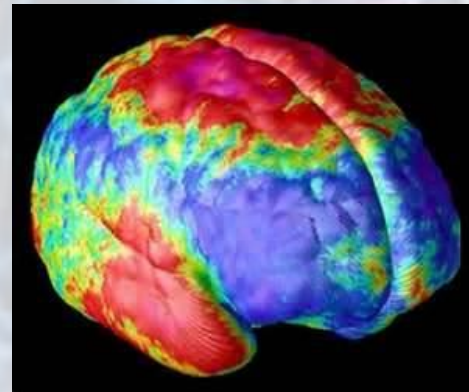
# NEUROLOGY

- neu·rol·o·gy
- /nʊˈrɒlədʒi, nyʊ-/ Show Spelled [noo-rol-uh-gee, nyoo-] Show IPA
- noun the science of the nerves and the nervous system, especially of the diseases affecting them.
- *Origin:*  
1675-85; < Neo-Latin neurologia. See neuro-, -logy
- Related forms neu·ro·log·i·cal  
/ˌnʊərəˈlɒdʒɪkəl, ˌnyʊər-/ Show Spelled [noor-uh-loj-i-kuhl, nyoor-] Show IPA , adjective
- neu·ro·log·i·cal·ly, adverb



# NEUROLOGY (CONTINUED)

- **neurology** (njʊ'rolədʒɪ) — *n*  
the study of the anatomy,  
physiology, and diseases of  
the nervous system
- neu'rologist** — *n*





# SOURCES!!

- Etymology
- Etymology
- Forensic
- Forensic
- Kylie
- Kylie
- Images